

2025 - 2026

# TECHNOLOGY AT TEMPLE

 Temple  
University  
Information Technology Services



## COMMUNICATION AND COLLABORATION

### TUmail

Stay in touch via email, keep organized with calendars and tasks.

📧 [its.temple.edu/email-account](https://its.temple.edu/email-account)

### TUportal

Access popular Temple resources and more at [tuportal.temple.edu](https://tuportal.temple.edu). Inside, you'll find the tools, apps and information you need to succeed, as well as convenient access to other important university resources and systems.

Use TUportal to view your class schedule, access coursework through Canvas, check your tuition balance, set up appointments with your advisor and much more.

You'll also find the **Next Steps** channel that notifies you when it's time to complete important tasks, such as registering for classes, viewing/accepting your financial aid award, paying bills or selecting your meal plan.

### Microsoft 365

Download Microsoft 365 for free on up to five Macs/PCs, plus five mobile devices or tablets. Use online tools such as Teams to meet and collaborate with your peers, OneNote to organize class materials, and OneDrive to store and share your files. Word, PowerPoint and Excel are also included so you can collaborate on documents, organize tasks and more.

📧 [its.temple.edu/microsoft365](https://its.temple.edu/microsoft365)

### Zoom

Collaborate with other students and instructors online through web conferencing. Temple provides you with access to premium Zoom features including extended meeting duration and larger participant capacity.

📧 [zoom.temple.edu](https://zoom.temple.edu)

### TUmobile

Browse your class schedule, grades, campus maps and more on your mobile device.

📧 [its.temple.edu/tumobile](https://its.temple.edu/tumobile)

### Sites.temple.edu

Build your online presence with a personalized Wordpress website. Whether you're sharing your research, building a portfolio, blogging your journey, or showcasing a creative project, Sites.temple.edu gives you the tools to do it all, no coding required. With a robust library of themes and plugins, design a site that reflects your unique style and purpose.

📧 [sites.temple.edu](https://sites.temple.edu)

### Poll Everywhere

Engage with your instructors using an easy-to-use classroom and polling app.

📧 [its.temple.edu/poll-everywhere](https://its.temple.edu/poll-everywhere)

### Google Workspace

Access Google online tools, such as Drive, Docs, Sheets and Slides.

📧 [its.temple.edu/googleapps](https://its.temple.edu/googleapps)

## DESKTOP AND MOBILE COMPUTING

### Shoppers Guide

View recommended/required computer specifications and learn about educational discounts for computer equipment and software.

📧 [its.temple.edu/shoppersguide](https://its.temple.edu/shoppersguide)

### OWLtech Store

Shop for a computer and other tech gear at OWLtech, Temple's official on-campus technology store. Located in Pearson Hall, OWLtech offers brands including Apple, Dell and Lenovo at education pricing. The OWLtech team also offers certified Apple and Lenovo repairs, laptop rentals & loaners, and device trade-ins.

📧 [shopowltech.com](https://shopowltech.com)

### REtech

Shop online for recycled/refurbished computers, monitors, printers, and many other electronic devices at below market price.

📧 [shopowltech.com/retech](https://shopowltech.com/retech)

### Laptop Share

Borrow a laptop for up to four hours from automated kiosks on Temple's Main, Ambler and Center City campuses. Then return it to a kiosk location that is most convenient to your location.

📧 [its.temple.edu/laptopshare](https://its.temple.edu/laptopshare)

### Battery Share

Borrow a power bank for up to five hours to charge your laptop or mobile tech devices using automated kiosks at Alter Hall, Charles Library, Paley Hall, Pearson Hall, Ritter Hall, The TECH Center, Tuttleman, Ambler Campus or Center City Campus.

📧 [its.temple.edu/batteryshare](https://its.temple.edu/batteryshare)

### Print on the Go

Use your print quota to submit and pick up requests from your laptop or mobile device. Then pick them up at any Print on the Go station throughout campus.

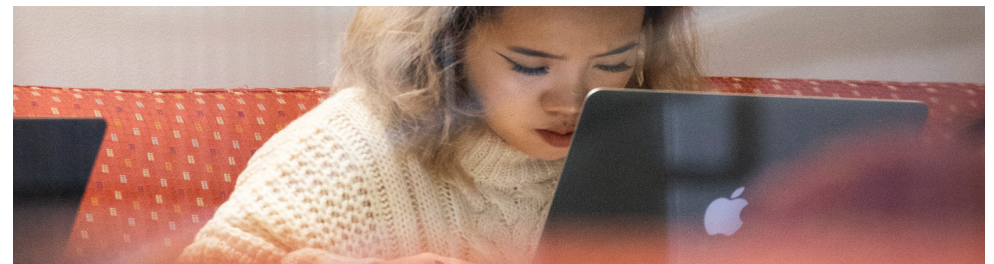
📧 [its.temple.edu/printgo](https://its.temple.edu/printgo)

### Adobe Creative Cloud

Access all premium features of Adobe Express, a cloud-based platform for designing graphics, videos, flyers, and more. Get started today with no subscription required.

You can also subscribe to the full Adobe Creative Cloud suite of apps for coursework, such as Photoshop, InDesign, After Effects, and Acrobat Pro. This subscription must be renewed each semester.

📧 [its.temple.edu/adobe](https://its.temple.edu/adobe)





## TEACHING AND LEARNING\*



### TECH CENTER

Temple's award-winning computer facility, located on Main Campus, provides a vibrant environment to study, socialize and collaborate while taking advantage of premier technology including:

#### Over 450

Computers available for student use

#### 150

Software applications\*\*

#### 13

Breakout rooms with wireless projection (Kramer/Apple TV)

#### 3

WhisperRoom booths suitable for recording podcasts, vocal narrations, and other individual recording sessions

#### 2

MediaScape collaboration tables

#### 2

GamrPods for remote classes, video/audio calls, gaming

#### Plus:

- Wireless loaner laptops
- Laptop Share kiosk
- Battery Share kiosk
- Wireless printing
- Color and B&W laser printing
- Poster and inkjet printing
- Specialty labs for video editing, music and graphic design
- Quiet study rooms
- Media studio for shooting video, photography and recording audio
- Monitors to connect your laptop for dual screen computing
- Lounge chairs with ample power to connect your laptop
- Cell phone charging lockers
- Standup Desks

Learn more:

[its.temple.edu/techlabs](https://its.temple.edu/techlabs)

#### Canvas

Canvas is the university's comprehensive learning management system, providing access to course materials, assessments, and communication.

[its.temple.edu](https://canvas.temple.edu)

#### Other Computer Labs

In addition to the TECH Center, Temple offers school and college computer labs on Main Campus, as well as labs at other locations, such as the Health Sciences Center TECH Center and the Ambler Campus Technology Center. Most labs feature workstations with general and specialized software and Print on the Go print stations. For a list of computer labs, visit:

[its.temple.edu/computerlabs](https://its.temple.edu/computerlabs)

#### OWLab

Remotely access many specialized Windows-based apps needed for coursework from off campus.

[its.temple.edu/owlab](https://its.temple.edu/owlab)

#### Classroom Technology & Tools

- Over 500 smart classrooms featuring computers, built-in multimedia and wireless access
- Lecture capture programs for instructors to record and share class lectures online
- Wireless projection (Kramer/Apple TV) at expanding locations

## INFRASTRUCTURE

### Wireless on Campus

Access ubiquitous wireless Wi-Fi in all university buildings, including residence halls and most outdoor locations on campus.

[its.temple.edu/connect](https://its.temple.edu/connect)

### Xfinity on Campus

Included with campus housing, the Xfinity Stream app enables you to watch top networks, live sports, and thousands of Xfinity On Demand movies and shows.

[xfinityoncampus.com](https://xfinityoncampus.com)

## IDENTITY AND ACCESS

### AccessNet Account

Use your AccessNet username and password to log in to Temple technology resources and systems.

[its.temple.edu/accessnet](https://its.temple.edu/accessnet)

### Multi-Factor Authentication

Protect your personal information when visiting Temple websites by enabling Multi-Factor Authentication and installing the Duo Mobile app on your phone.

[its.temple.edu/MFA](https://its.temple.edu/MFA)

### OWLcard Mobile

Set up OWLcard Mobile on your phone to swipe into buildings, including your residence hall and campus recreation facilities.

[its.temple.edu/owlcard](https://its.temple.edu/owlcard)

### Cherry & White Directory

Find contact information for students, faculty and staff and create email aliases to personalize your @temple.edu email address.

[directory.temple.edu](https://directory.temple.edu)

\* Quantified data such as count of computers, count of breakout rooms, etc. was verified by ITS staff.

\*\* Figures are approximate and dependant on annual school and college software requests.

## IT PROFESSIONAL SERVICES

### Adaptive Technologies

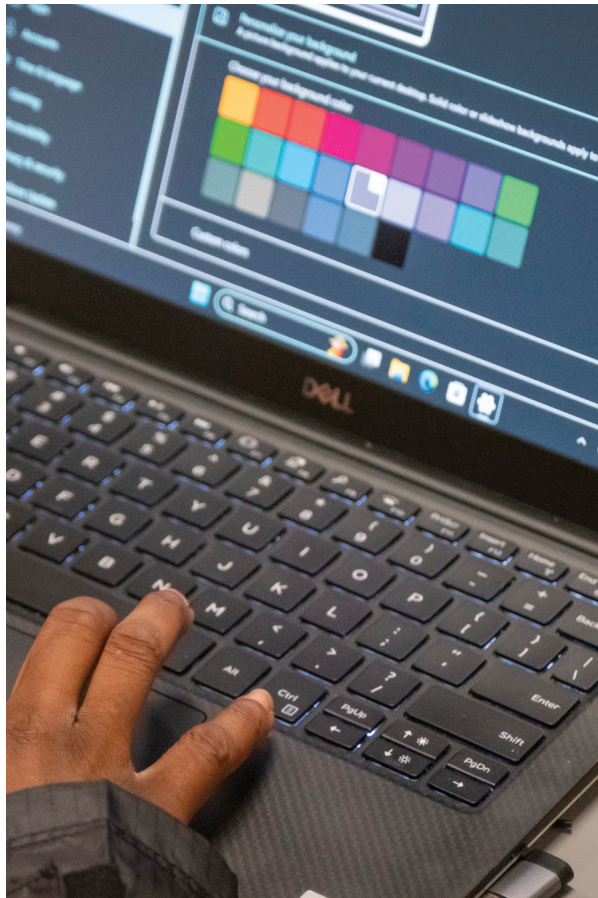
Accessibility tools, available on all lab and campus computers, provide adaptive technologies to students with disabilities.

🔗 [its.temple.edu/computer-lab-accessibility-tools](https://its.temple.edu/computer-lab-accessibility-tools)

### LinkedIn Learning

LinkedIn Learning offers a large library of on-demand video courses on topics such as business, technology and creativity taught by industry experts.

🔗 [linkedinlearning.temple.edu](https://linkedinlearning.temple.edu)



[its.temple.edu](https://its.temple.edu)

[tuhelp.temple.edu](https://tuhelp.temple.edu)

## TECHNOLOGY SUPPORT CENTER

The Technology Support Center provides a wide range of technology, application and university support. The TSC is open weekdays throughout the year, except holidays. For details and hours of operation, see:

🔗 [its.temple.edu/techhelp](https://its.temple.edu/techhelp)


**Location:** Bell Building (Room 106)


**Online:** Submit requests for help or chat online at [tuhelp.temple.edu](https://tuhelp.temple.edu)


**Email:** [help@temple.edu](mailto:help@temple.edu)

**Call:** 215-204-8000



 [@templeuniversityITS](https://www.tiktok.com/@templeuniversityITS)

 [@templeuniversityITS](https://www.instagram.com/templeuniversityITS)

 [@TempleTech](https://twitter.com/TempleTech)

 [facebook.com/templeuniversityITS](https://facebook.com/templeuniversityITS)